

XENERGY BE SERIES

High-Power Wireless Charging Solution

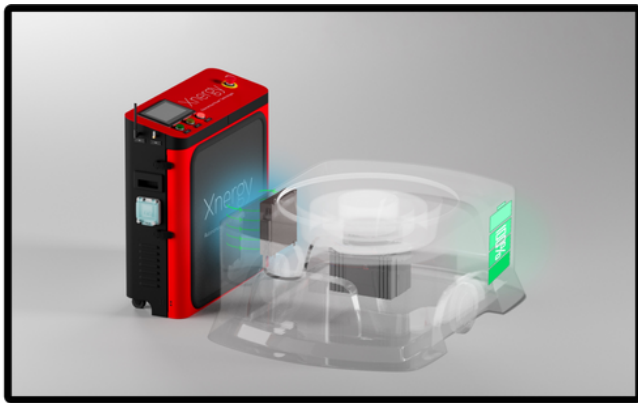
Xnergy
Autonomous Power Technologies



A PRACTICAL APPROACH TO WIRELESS CHARGING

The Xnergy BE Series enables wireless charging for your electrified industrial vehicles, from AGVs/AMRs to service robots. It offers:

- High Charging Power of **3 - 9kW**
- **Universal Compatibility** Across Battery Types
- Compliance with **TÜV SÜD CE** Safety Regulations



KEY SPECIFICATIONS

SIZE	-----	20 X 20CM
MAX AIRGAP	-----	7CM
VOLTAGE RANGE	-----	16 - 60V
MAX CURRENT	-----	90A (per module)
MAX STACKABLE CURRENT	-----	270A

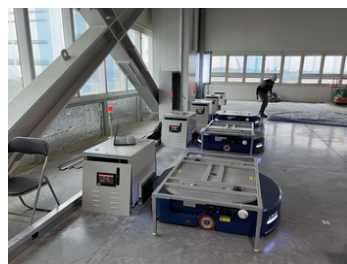
APPLICATION EXAMPLES



WAREHOUSING



CLEANROOM



AUTOMOTIVE



FORKLIFTS

...AND MORE!

CERTIFICATIONS

Certification is a mark of quality, safety and compatibility. Our wireless charging solutions meet rigorous international standards, ensuring seamless performance across a wide range of devices.



KEY BENEFITS



ONE CHARGER FOR ALL YOUR ROBOTS

Free yourself from compatibility issues and scale confidently. One transmitter works across multiple battery types as well as communication protocols.



FLEXIBLE DEPLOYMENT

With a wide maximum airgap of 7CM and a small footprint, the Xnergy BE series gives you the power to optimise the space you have, while ensuring full power charging.



HIGH CHARGING POWER & SPEED

Cut down time spent on charging with fast charge. The Xnergy BE series supports up to 9kW of power and a maximum charging current of 90A. This allows you to charge a 100Ah capacity battery from 0% to 100% in 1 hour.



CUTS MAINTENANCE AND LABOR COSTS

With wireless charging, you can save on maintenance expenses without worrying about fraying wires and other wear-and-tear concerns while letting your robots charge themselves.



EASY PLUG-AND-PLAY IMPLEMENTATION

The Xnergy BE series is designed with a modular approach, allowing users to deploy or retrofit the receiver unit easily on robots without major modifications required.



SMART-ENABLED

The Xnergy BE series enables smart fleet management and predictive maintenance through data transfer, supporting a wide range of communication protocols. This includes auto-turn ON, CANBUS, MODBUS, and GPIO.



PROVEN IN REAL-WORLD SETTINGS

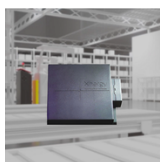
Today, there are over 2000 deployed Xnergy BE Series modules active across 80+ clients in 20+ countries. With over 1 million successful charges, the solution has been optimised to work efficiently in real-world scenarios.



SAFETY-FOCUSED

The Xnergy BE series has been tested and certified by TÜV SÜD, maintaining compliance with the highest safety standards globally.

ORDERING INFORMATION



Receiver Charging Unit 24V/48V

RX2409BE-0U00 / RX4805BE-0U00

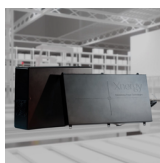
Single component receiver that easily installs into AGV or mobile robot



Xnergy Docking Briefcase (3kW)

XDB 3100 / XDB 3001

Complete charging station with built-in transmitter powering unit, pad, and display which shows charging information and error codes. Includes LEDs to visually indicate charging status.



Transmitter Powering Unit with Pad

TX30BE-1U00

Deploy flexibly. It provides both high efficiency and large tolerance; accurate positioning is no longer required.



Universal Transmitter Charging Station

XDC 3300

Complete charging station (built-in transmitter powering unit, pad, and display) with support for Robotics Middleware Framework (RMF) interoperability.



Smart Display Module

XG-HMI7-G

This HMI unit provides charging information, error codes and provide continuous remote support on firmware update.



Xnergy Docking Cabinet for AGV trucks (6/9kW)

XDC 6000 / XDC 9000

Complete charging station with built-in transmitter powering unit, pad, and display which shows charging information and error codes. Includes LEDs to visually indicate charging status. Support 6 and 9kW.

ABOUT Xnergy

Xnergy is the leader in contactless wireless charging solutions, boasting high charging speeds, battery compatibility, and safety compliance (TÜV SÜD CE Certified).

For enquiries, please contact info@xnergytech.com or your local distributors.

www.xnergytech.com



CONTACT VIA WHATSAPP



CONNECT ON LINKEDIN

OFFICES

SINGAPORE HQ
988 Toa Payoh North
#06-01
Singapore 319002

KOREA
57015, 431 Teheran-ro
Gangnam-gu
Seoul

BOSTON
12 Channel St
Boston
MA 02210

CHINA
Suzhou Xineng Power Co. Ltd
210, BLK 15, NO. 388 Xinping S,
Suzhou Industrial Park
Jiangsu Province, China 215000

FRANCE
66 boulevard Niels Bohr
Bâtiment CEI 1
69100 Villeurbanne
France