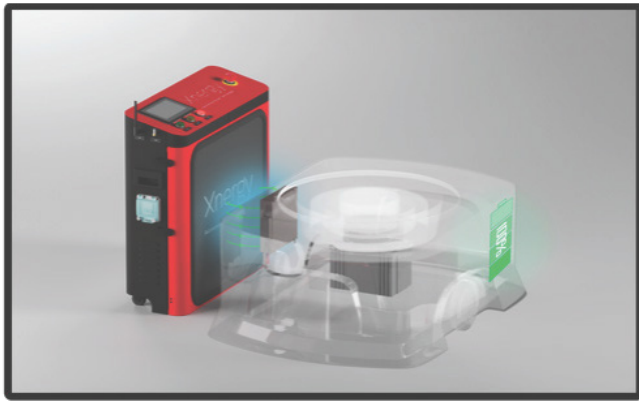




A PRACTICAL APPROACH TO WIRELESS CHARGING

The Xenergy BE Series enables wireless charging for your electrified industrial vehicles, from AGVs/AMRs to service robots. It offers:

- High Charging Power of **3 - 9kW**
- **Universal Compatibility** Across Battery Types
- Compliance with **TÜV SÜD CE** Safety Regulations



KEY SPECIFICATIONS

SIZE	-----	20 X 20CM
MAX AIRGAP	-----	7CM
VOLTAGE RANGE	-----	16 - 60V
MAX CURRENT	-----	90A (per module)
MAX STACKABLE CURRENT	-----	270A

APPLICATION EXAMPLES



WAREHOUSING



CLEANROOM



AUTOMOTIVE



FORKLIFTS

...AND MORE!

TESTIMONIALS

"Our AMR is designed with Xenergy's wireless charging solution and the experience was great! The technical team gave us strong support to ensure our design and integration was done well and easy. Xenergy's charging solution will help businesses achieve universality: only needing of one-charger-for-all. This is especially important as we have see greater adoption of different robots in the same environment."

"Our operational needs have been met by the Xenergy charging technology put in place. The effective contactless charging also helps to save time during our egress and ingress (important for emergency responders)".

"This new way of charging our AGV forklift in our warehouse, it very safe even compared to contact chargers. I believe our AGVs can work more now due to fast charge offered by Xenergy's wireless charging."

KEY BENEFITS



ONE CHARGER FOR ALL YOUR ROBOTS

Free yourself from compatibility issues and scale confidently. One transmitter works across multiple battery types as well as communication protocols.



FLEXIBLE DEPLOYMENT

With a wide maximum airgap of 7CM and a small footprint, the Xnergy BE series gives you the power to optimise the space you have, while ensuring full power charging.



HIGH CHARGING POWER & SPEED

Cut down time spent on charging with fast charge. The Xnergy BE series supports up to 9kW of power and a maximum charging current of 90A. This allows you to charge a 100Ah capacity battery from 0% to 100% in 1 hour.



CUTS MAINTENANCE AND LABOR COSTS

With wireless charging, you can save on maintenance expenses without worrying about fraying wires and other wear-and-tear concerns while letting your robots charge themselves.



EASY PLUG-AND-PLAY IMPLEMENTATION

The Xnergy BE series is designed with a modular approach, allowing users to deploy or retrofit the receiver unit easily on robots without major modifications required.



SMART-ENABLED

The Xnergy BE series enables smart fleet management and predictive maintenance through data transfer, supporting a wide range of communication protocols. This includes auto-turn ON, CANBUS, MODBUS, and GPIO.



PROVEN IN REAL-WORLD SETTINGS

Today, there are over 2000 deployed Xnergy BE Series modules active across 80+ clients in 20+ countries. With over 1 million successful charges, the solution has been optimised to work efficiently in real-world scenarios.



SAFETY-FOCUSED

The Xnergy BE series has been tested and certified by TÜV SÜD, maintaining compliance with the highest safety standards globally.

ORDERING INFORMATION

Receiver Charging Unit 24V/48V

RX2409BE-OK00 / RX4805BE-OK00

Single component receiver that easily installs into AGV or mobile robot

Transmitter Powering Unit with Pad

TX30BE-1K00

Deploy flexibly. It provides both high efficiency and large tolerance; accurate positioning is no longer required.

Smart Display Module

XG-HMI7-G

This HMI unit provides charging information, error codes and provide continuous remote support on firmware update.

Xnergy Docking Briefcase (3kW)

XDB 3100

Complete charging station with built-in transmitter powering unit, pad, and display which shows charging information and error codes.

Universal Transmitter Charging Station

XDC 3300

Complete charging station (built-in transmitter powering unit, pad, and display) with support for Robotics Middleware Framework (RMF) interoperability.

Xnergy Docking Cabinet for AGV trucks (6/9kW)

XDC 6000 / XDC 9000

Complete charging station with built-in transmitter powering unit, pad, and display which shows charging information and error codes. Includes LEDs to visually indicate charging status. Support 6 and 9kW.

Leading The Way In Engineered Solutions!

Ready to revolutionize your manufacturing operations? Contact us today to explore our cutting-edge Industrial Automation Solutions and find the perfect robotic parts and accessories for your needs. Let's take your business to new heights!

Scan The QR Code And Visit Our Website For More Information About RAM Solutions.

Office

1904 Woodslee Drive Troy, MI 48083

