

## BASICLINE - Pneumatics & Vacuum

### FEATURES

- Easy to install and disassemble
- Release sleeve: Debris resistant
- Rotating collet: No tube scoring
- Check valves & flow controls
- Rotating fittings (800 RPM)
- Threads: NPT, BSPP, BSPT Metric mm/inch & inch/mm combinations
- Ni & chemical plated brass
- Custom products available
- Vacuum rated

-14 to 232 psi  
-4 to 140 °F



### RANGE OF APPLICATIONS

- Automation
- Automotive
- Food & Pharma
- Packaging & Filling
- End of Arm Tooling



## LIQUIDLINE - Cooling water systems

### RANGE OF APPLICATIONS

- Resistance welding
- Robotic weld guns
- Server cooling systems
- Liquid cold plate cooling
- Laser cooling systems
- Mold & Die cooling systems
- Transformer cooling systems



-14 to 232 psi  
-4 to 248 °F



### FEATURES

- Release sleeve: Weld Spatter resistant
- Optimized flow design
- Wide sweep design: 200%+ flow
- Available in:
  - Stainless Steel
  - Brass dezincification-resistant
  - Aluminum
- Standard O-rings: FKM (Viton)
- Threads: NPT, BSPP, BSPT Metric, mm/inch & inch/mm combinations
- Rotating collet: No tube scoring

## INOXLINE - Stainless steel for aggressive media

### FEATURES

- Acid resistant stainless steel
- Easy to install & disassemble
- Release sleeve: Debris resistant
- Rotating collet: No tube scoring
- Standard O-rings: FKM (Viton<sup>®</sup>)
- Special o-ring materials by request
- Custom products available
- Threads: NPT, BSPP, BSPT Metric, mm/inch & inch/mm combinations
- Vacuum rated

-14 to 232 psi  
-4 to 248 °F



### RANGE OF APPLICATIONS

- Food processing
- Harsh aggressive media
- Medical & Pharmaceutical
- Clean room & wash-down
- Chemical Processing
- Air, gas & liquid applications
- Packaging industry
- Painting technology

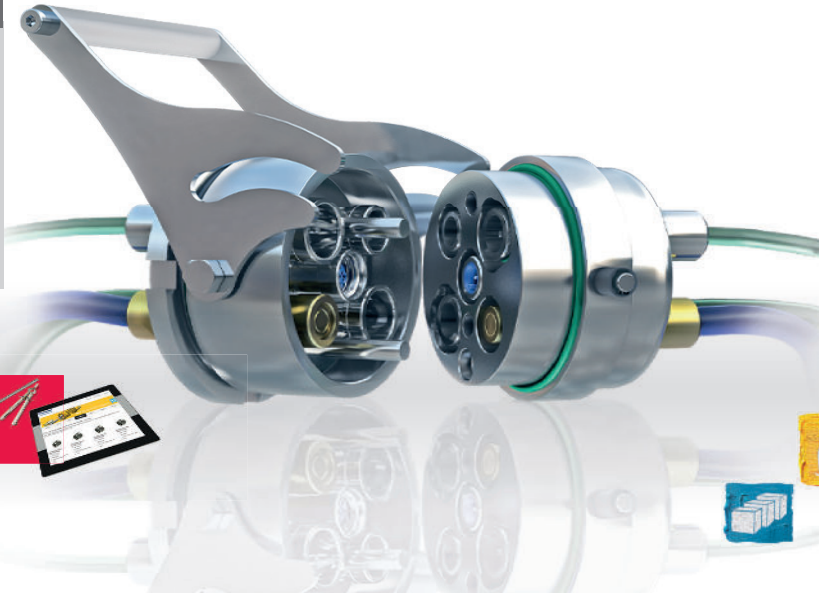


## MULTILINE - Multi-media connector

An innovation line of robust multiple connectors to combine different operating media in a single interface as compressed air, vacuum, gases, cooling water and electrical media ranging from 4 to 40 connections.

### FEATURES

- IP67 & 4.0 Industry
- Available in inch and metric size connections
- Quick tool changing modular insert system
- Thousands of combination options



### RANGE OF APPLICATIONS

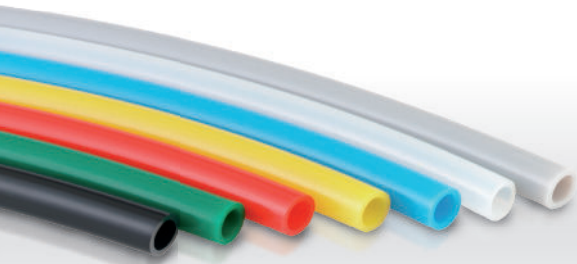
- Mechanical engineering
- Plant engineering
- Automobile industry
- Robotics
- Automation
- Tool changing
- End of arm tooling

### MULTILINE CONFIGURATOR

Create your individual multi-media connector on [CONFIGURATOR.EISELE-CONNECTORS.COM](http://CONFIGURATOR.EISELE-CONNECTORS.COM)



## PLASTIC TUBES



### FEATURES

- Flame-retardant
- High Flow
- Durable
- Hydrolysis/Microbial resistant
- Kink Resistant
- UV/Solvent resistant
- FDA-Compliant
- Flame-retardant
- Inch and Metric
- Silicon-free



Eisele Connectors Inc.  
99 Monroe Ave NW, Suite 200  
Grand Rapids, Michigan 49503 | USA

Phone +1 (616) 726-7714  
Fax +1 (616) 726-7701

[sales@eisele-connectors.com](mailto:sales@eisele-connectors.com)  
[www.eisele-connectors.com](http://www.eisele-connectors.com)

QUALITY CONNECTION COMPONENTS  
FOR COMPRESSED AIR, VACUUM, GASES,  
LIQUIDS, ELECTRICAL AND ELECTRONIC SIGNALS